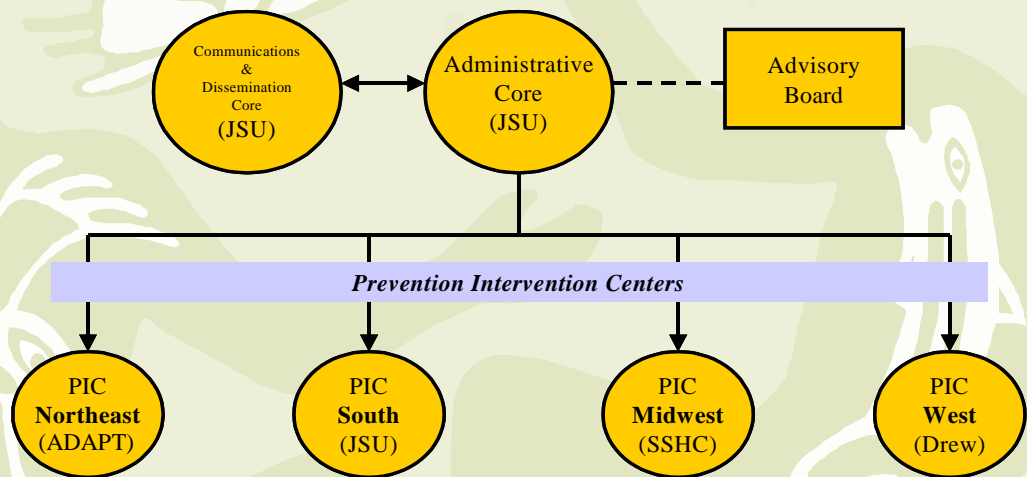


African American Prevention Intervention Network SANKOFA FACT SHEET

November 2001

No. 1A

African American Prevention Intervention Network (APIN)



The African American Prevention Intervention Network (APIN) is a national project designed to assist community-based organizations (CBOs) with intervention design, development, implementation and evaluation. The APIN builds capacity among CBOs through a variety of delivery mechanisms including: Information Transfer, Skills-Building, Technical Services, Technical Consultation and Technology Transfer.

The APIN is administered by Jackson State University, supported by a communications and dissemination core. Input is received via a national advisory board. Services are delivered by Prevention Intervention Centers (PICs). PICs are located in four regions of the United States and are operated by APIN Coalition members. The Northeastern PIC is operated by the Association for Drug Abuse Prevention and Treatment, Inc.; Southern PIC by Jackson State University, Midwestern PIC by South Side Help Center and Western PIC by Charles R. Drew University of Medicine & Science. The APIN is complemented by the diverse expertise of its staff.

CAPACITY-BUILDING ASSISTANCE SERVICES	STAFF EXPERTISE
Behavioral Science	Formal Behavioral Theory, Human Behavior, Behavioral Epidemiology
Program Evaluation	Identifying Behavioral Outcomes, Outcome Evaluation, Outcome Monitoring Quality Assurance
Social Marketing	Priority-setting Methods/Tools, Using Marketing Mixes
Intervention	Cultural Competency, Research Synthesis, Adaptation/Replication, Curricula Development
Population-Based Needs Assessment	Assessment Strategies/Data Sources, Quantitative Research Methods
HIV Prevention Intervention Effectiveness	Applying Behavioral Social Science, Facilitation Skills

For more information, call the technical assistance analyst at the Mississippi Urban Research Center, 1-866-JSU-MURC (578-6872).

