

# Adinkra

**Welcome**  
to the  
**U. S. Conference  
on AIDS**

**Sept. 13-16, 2001**

Fontainebleau Hilton Resort  
and Towers  
Miami Beach, Florida

Please visit  
the  
Mississippi Urban  
Research Center

**DISPLAY BOOTH  
No. 416**

*to receive more  
information on the  
African American  
Prevention Intervention  
Network (APIN)*

## INSIDE

2...African American Prevention  
Intervention Network (APIN)

Map of Geographical Locations

Capacity-building Assistance Services

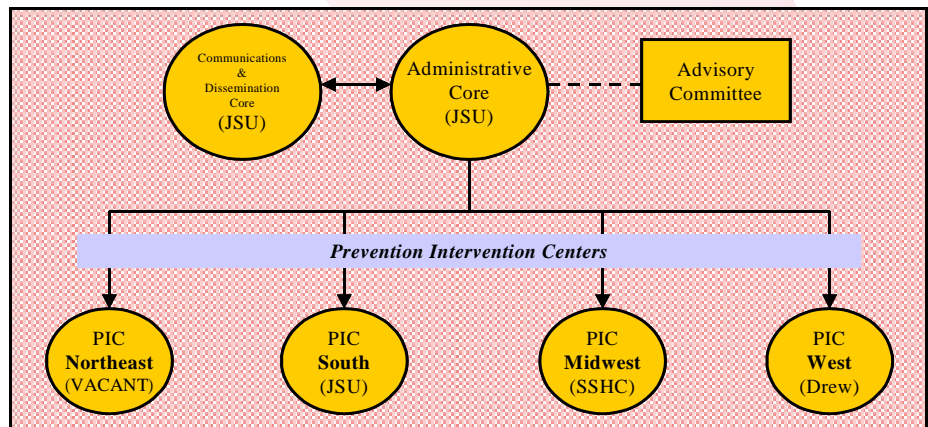
3...Goals of APIN

Capacity-building Assistance areas

Type of Capacity-building Assistance

## SPECIAL U.S. CONFERENCE ON AIDS EDITION

### African American Prevention Intervention Network (APIN)



The African American Prevention Intervention Network (APIN) is a national project designed to assist community-based organizations (CBOs) with intervention design, development, implementation and evaluation. The APIN builds capacity among CBOs through a variety of delivery mechanisms including: Information Transfer, Skills-Building, Technical Services, Technical Consultation and Technology Transfer.

The APIN is administered by Jackson State University, supported by a communications and dissemination core. Input is received via a national advisory board. Services are delivered by Prevention Intervention Centers (PICs). PICs are located in four regions of the United States and are operated by APIN Coalition members. The Southern PIC is operated by Jackson State University; Midwestern PIC by South Side Help Center and Western PIC by Charles R. Drew University of Medicine & Science.

| Midwestern Prevention Intervention Center   | Southern Prevention Intervention Center  |
|---|--|
| <p><b>South Side Help Center (SSHC)</b><br/>11300 S. Halsted St., Suite F<br/>Chicago, IL 60628<br/>(773) 568-6245</p> <p>Geographic coverage area: IL, IN, IA, KS, MI, MN, MO, NE, ND, OH, SD and WI</p> | <p><b>Jackson State University (JSU)</b><br/>P.O. Box 17309<br/>Jackson, MS 39217<br/>(601) 979-4100</p> <p>Geographic coverage area: AL, AR, DC, DE, FL, GA, KY, LA, MD, MS, NC, OK, SC, TN, TX, VA and WV</p>  |
| Northeastern Prevention Intervention Center   | Western Prevention Intervention Center   |
| <p><b>VACANT</b></p> <p>Geographic coverage area: CT, MA, ME, NH, NJ, NY, PA, PR, RI, VT and U.S. Virgin Islands</p>  | <p><b>Charles R. Drew University of Medicine &amp; Science (DREW)</b><br/>2200 W. Artesia Blvd., Suite 110 • Rancho Dominguez, CA 90220<br/>(310) 638-1879</p> <p>Geographic coverage area: AK, AZ, CA, CO, HI, ID, NV, NM, OR, MT, UT, WA, WY, American Samoa, Commonwealth of Northern Mariana Islands, Federated States of Micronesia, Guam, Republic of Marshall Islands and Palau</p> |



**ADMINISTRATIVE CORE**

- Dr. Mark Colomb**  
*Project Director*
- Marilyn A. Moering**  
*Capacity-Building Assistance Manager*
- Jerrdean Franklin**  
*Quality Assurance Manager*
- Alfred Carter**  
*Finance/Budget Manager*
- LaShonda Stewart**  
*Evaluation Specialist*
- Denise Modkins**  
*Technical Assistance Analyst*

**COMMUNICATION CORE**

- Pamela McCoy**  
*Marketing Coordinator*
- Valarie Smith Jackson**  
*Graphic Artist*
- Raymonda Delaware**  
*Web Master*

**APIN ADVISORY BOARD**

- Jamie M. Bracey**  
*Yeadon, Pennsylvania*
- Nigel Cuffie**  
*Jackson, Mississippi*
- Dr. Janice Duncan**  
*Jackson, Mississippi*
- Dr. Henry Frank**  
*Brooklyn, New York*
- Sedrick Gardner**  
*Oakland, California*
- Dr. Rashad K. Saafir**  
*Chicago, Illinois*
- Dr. Ron Simmons**  
*Washington, D.C.*
- Lowell Stafford**  
*Orlando, Florida*
- Dana Williams**  
*St. Louis, Missouri*
- Imani P. Woods**  
*Seattle, Washington*

**Adinkra**

*Executive Editor:* Dr. Mark Colomb  
*Editor:* Pamela McCoy  
*Managing Editor:* Marilyn A. Moering  
*Asst. Managing Editor:* Nadine Jones  
*Graphic Artist:* Valarie Smith Jackson

**Adinkra** is a quarterly publication of the Jackson State University Mississippi Urban Research Center's African American Prevention Intervention Network (APIN).

**Adinkra** is published as a resource for community-based organizations funded by the Centers for Disease Control and Prevention. Inquiries about articles appearing in this issue or requests for additional information concerning capacity-building assistance should be directed to: Southern Prevention Intervention Center, Jackson State University, P. O. Box 17309, Jackson, MS 39217; Toll-free: 1-866-JSU-MURC; Telephone: (601) 979-4100; Fax: (601) 979-4336.

# African American Prevention Intervention Network (APIN)

The African American Prevention Intervention Network (APIN) provides capacity-building assistance services in a variety of areas and is complemented by the diverse expertise of its staff within these areas. APIN has an array of consultants who have expertise in the social and behavioral sciences. Consultants provide assistance in the following areas:

Consultants are a vital component of a local resource network operated regionally by APIN coalition members. Prevention Intervention Centers (PICs) utilize consultants to provide technical services and consultation to community-based organizations.

Consultants are available to assist you in the four regions of the United States. Please contact a Prevention Intervention Center (PIC) near you.

**PIC**  
Each Prevention Intervention Center (PIC) is operated by an APIN coalition member. The APIN coalition member and geographic area of each PIC are color-coded as follows:

- **Vacant**  
*Northeastern PIC, Phone: (601) 979-4100*
- **South Side Help Center**  
*Midwestern PIC, Phone: (773) 568-6245*
- **Jackson State University**  
*Southern PIC, Phone: (601) 979-4100*
- **Charles R. Drew University of Medicine & Science**  
*Western PIC, Phone: (310) 638-1881*

| CAPACITY-BUILDING ASSISTANCE SERVICES     | STAFF EXPERTISE   |
|---|---|
| Behavioral Science                        | Formal Behavioral Theory<br>Human Behavior<br>Behavioral Epidemiology       |
| Program Evaluation                        | Identifying Behavioral Outcomes<br>Outcome Evaluation<br>Outcome Monitoring |
| Social Marketing                          | Priority-setting Methods/Tools<br>Using Marketing Mixes                     |
| Intervention Adaptation/Replication       | Cultural Competency<br>Research Synthesis                                   |
| Population Based Needs Assessment         | Assessment Strategies/Data Sources<br>Quantitative Research Methods         |
| HIV Prevention Intervention Effectiveness | Applying Behavioral Social Science<br>Facilitation Skills                   |

## African American Prevention Intervention Network (APIN)

### The goals of the APIN Project are:

- ◆ To provide behavioral science to African-American community-based organizations
- ◆ To increase skills of African-American community-based organizations relative to HIV prevention intervention program design, development, implementation and evaluation
- ◆ To provide technical consultation and services to African-American community-based organizations in support of HIV prevention
- ◆ To synthesize the latest research on effective HIV prevention for utilization at the local level

### Capacity-building assistance will be provided in the following areas:

- ◆ Population-based needs assessment
- ◆ Intervention adaptation/replication
- ◆ HIV prevention intervention effectiveness
- ◆ Behavioral science
- ◆ Health communication
- ◆ Social marketing
- ◆ Research diffusion
- ◆ Curricula development
- ◆ Service integration
- ◆ Program evaluation



### WHAT TYPE OF CAPACITY-BUILDING ASSISTANCE CAN YOU EXPECT?

**Information Transfer** – Collecting, packaging and disseminating data through newsletters, reports, announcements, list serves, batch faxes and a web site.

**Skills-building** – Training activities customized for staff, board members, trainers, volunteers, community members and opinion leaders to build skills and competence.

**Technical Consultation** – Providing expert advice to key personnel on how to accomplish a task or series of tasks via written documents, faxes, telephone, e-mail or on-site presentations with the intent that the tasks will be carried out by the recipient of the advice.

**Technical Services** – Implementing tasks on-site using a variety of delivery mechanisms to assist an organization in coalition-building, network maintenance, community mobilization, community planning, etc. in competent and skillful manner.

**Technology Transfer** – Using products, methodologies or techniques either already in existence or newly-developed to provide skills-building, technical consultation or technical services.



African American  
Prevention  
Intervention Network  
Jackson State University  
(JSU)

**P. O. Box 17309**  
**Jackson, MS 39217**  
**Telephone: (601) 979-4100**  
**Toll-free: 1-866-JSU-MURC**  
**Fax: (601) 979-4336**

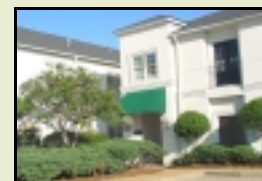
### Jackson State University



H. T. Sampson Library

Jackson State University is the fourth largest institution of higher learning in Mississippi and the only public four-year institution in the central Mississippi area.

### Mississippi Urban Research Center



Mississippi Urban Research Center

The Mississippi Urban Research Center (MURC), a division of Jackson State University's Office of Research Development and Support and Federal Regulations, has a mission to improve the quality of life through the conduct of basic and applied research and policy analysis and provide insight on solutions to urban problems.

#### Staff

#### **DR. MARK COLOMB**

*Project Director*  
*e-mail: mcolomb@mail1.jsums.edu*

#### **MARILYN MOERING**

*CBA Manager*  
*e-mail: marilyn.moering@jsums.edu*

# USCA Plenary Sessions Highlights

**Opening Plenary Breakfast**.....Thursday, September 13, 2001  
 “The Third Decade - Where Are We Going?” 8:30 A.M. - 10:00 A.M.

Speakers: **DAVID D. HO, M.D.**, 1996 *Time* Magazine Man-of-the-Year and **THE HONORABLE ALEX PENELAS**, Mayor, Miami-Dade  
Entertainment: SOUTH BEACH CHAMBER ENSEMBLE

**Plenary**.....Friday, September 14, 2001  
 “The Effects of AIDS in Sub-Saharan Africa” 12:15 P.M. - 2:00 P.M.

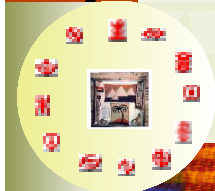
Speakers: **SIYALEWA COMMUNITY CHILDCARE PROJECT REPRESENTATIVE**, Soweto, South Africa  
Entertainment: VOICES OF AFRICA

**Plenary Lunch**.....Saturday, September 15, 2001  
 “AIDS in the Caribbean” 11:45 A.M. - 1:30 P.M.

Speakers: **CONGRESSWOMAN DONNA CHRISTIAN-CHRISTENSEN**, D-U.S. Virgin Islands and others TBA  
Entertainment: JAN SEBON, A HAITIAN STEEL DRUM GROUP

**Closing Plenary Lunch**.....Sunday, September 16, 2001  
 “Youth and HIV/AIDS” 11:45 A.M. - 1:30 P.M.

Speakers: **WINNIE MANDELA**, South African Activist, and **FIVE YOUTH EITHER AT-RISK OR LIVING WITH HIV/AIDS**  
Entertainment: SPEAKING HANDS, AN AFRICAN-AMERICAN SIGN LANGUAGE GOSPEL CHOIR



**Jackson State University**  
**MISSISSIPPI URBAN RESEARCH CENTER**  
 African American Prevention Intervention Network  
 850 East River Place, Suite 403 • Jackson, MS 39202  
 P. O. Box 17309 • Jackson, MS 39217

# APIN



African American Prevention Intervention Network