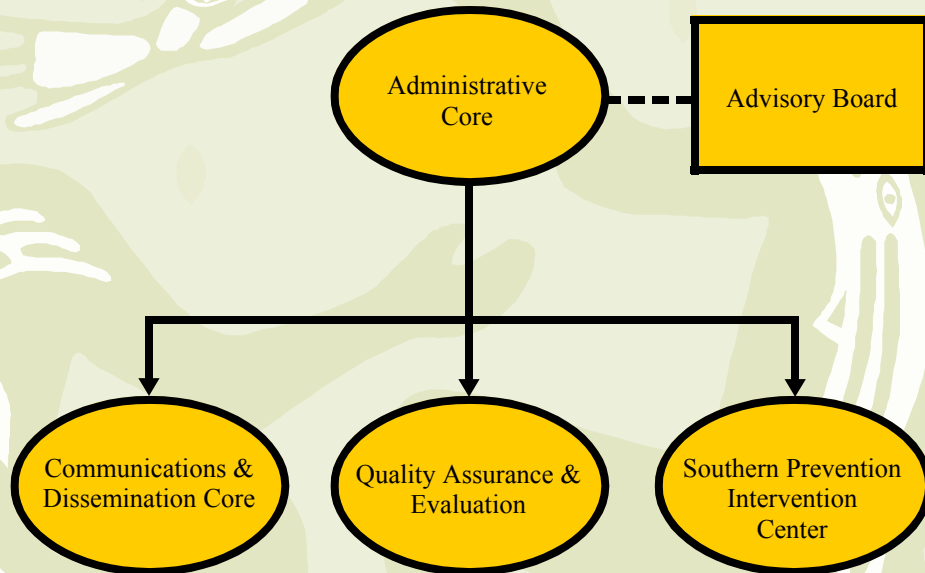


African American Prevention Intervention Network
SANKOFA FACT SHEET

May 2004

No. 1

(S-PIC/APIN)



The Southern Prevention Intervention Center of the African American Prevention Intervention Network (S-PIC/APIN) is a project designed to assist community-based organizations (CBOs) in the Southern Region of the United States with adaptation, implementation, quality assurance and evaluation of effective HIV prevention interventions for high-risk seronegative and HIV-positive racial/ethnic minority individuals. The S-PIC/APIN builds capacity among CBOs through a variety of delivery mechanisms including: information transfer, skills-building, technical services, technical consultation and technology transfer.

The S-PIC/APIN is administered by Jackson State University's Mississippi Urban Research Center. Input is received via a regional advisory board. Capacity-building assistance services in a variety of areas are delivered by expert staff.

CAPACITY-BUILDING ASSISTANCE SERVICES	STAFF EXPERTISE
Behavioral Science	Formal Behavioral Theory, Human Behavior, Behavioral Epidemiology
Program Evaluation	Identifying Behavioral Outcomes Outcome Evaluation, Outcome Monitoring, Quality Assurance, Developing Logic Models
Interventions	Implementation, Tailoring and Adaptation, Replication, Evaluation
Population-Based Needs Assessment	Assessment Strategies/Data Sources, Quantitative and Qualitative Research Methods
HIV Prevention Intervention Effectiveness	Research Synthesis, Cultural Competency, Applying Behavioral/Social Science, Facilitation Skills

